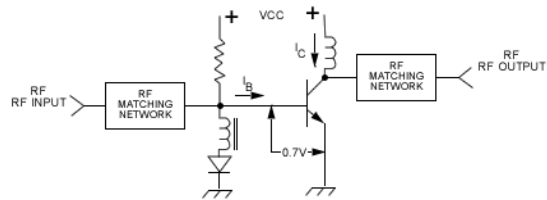


Class AB Operation

Class AB Amplifiers have a small forward DC bias, I_B . The collector current, I_C , (without RF drive) may be 1 % to 10% of the maximum design value.

As the RF drive is increased, the base bias (I_B) and the collector current (I_C) are increased proportionally.



Summary of Characteristics Class AB

Class AB Advantages:

- Multikilowatt Output Power
- Good Efficiency
- Compact Size
- Good Linearity
- Low Distortion
- Broad Bandwidth
- Relatively Cool Operation
- CW, AM, FM, TV, Phase and Pulse Amplification

Class AB Disadvantages:

- Limited Dynamic Range (15 to 30 dB)
- Restricted IMD Characteristic
- Higher Bandpass Ripple at Low RF Input Levels

Applications:

- ECM/EW Jammers
- Booster Amplifiers
- Transmitters
- RFI/EMI Testing
- High Power TWT Replacements
- Visual Television Amplifiers
- High Power Calibration Testing